

Setup after Windows 10 Feature Updates

We have received reports of symptoms that the background color of the menu becomes bright after updating to Windows 10 Feature Update. If you experience these symptoms, please change the settings in the following procedure.

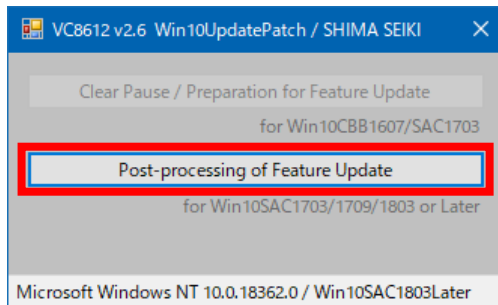
[Introduction]

- To update Windows, Internet connection is required.

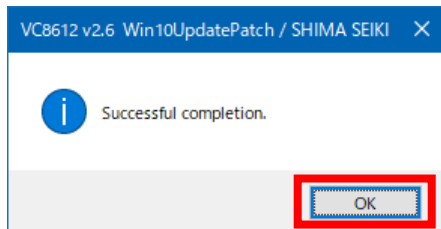
[How to deal]

Apply the standard SHIMA SEIKI settings in SDS-ONE APEX setting program. (Approximate time required: 5 minutes)

1. Execute [Win10UpdatePatch.exe] and then click [Post-processing of Feature Update].



2. When it runs correctly, the message [Successful completion.] is displayed. Click [OK] to close the menu.



3. Standard setting for SHIMA SEIKI design system is now complete.